

# **DRAIN INVADER**

## **PRO 3005 JETTER**

### **User Manual & Instructions**



**HYDRO JETTER**

**PRO 3005 Specs:**  
**5 GPM**  
**3000 PSI**



**Scan QR Code for Digital Manual**

**DRAIN  
INVADER**



**(866) 631-3569**



**cs@draininvader.com**



**DrainInvader.com**

## FOR THE UNSUNG HEROES OF PLUMBING

We know your work isn't easy. Long days, tight spaces, nasty blockages. **You face the problems most people would rather not even think about.** Yet, you show up with grit, skill, and pride, keeping drains flowing and the world moving. That's something worth honoring!



**When you invest in *Drain Invader*, you're getting more than a machine; you're getting a dedicated team that's committed to supporting you.** Whether it's replacement parts, accessories, nozzles, or even troubleshooting tips, our job is to make sure we always have your back. Need help in the field? Call us. Looking for the right tool for the next big job? We'll walk you through it. **From the first start-up to years down the line, we're here to keep you running strong.**

So, from all of us at *Drain Invader*, thank you for letting us be a part of your work. We're proud to serve the professionals who keep drains clear, businesses open, and families safe. Every line you clear is a victory, and we're honored to stand in your corner.

**Built for pros. Built for you. Thank you for being a *Drain Invader*.**

— The *Drain Invader* Team

# Table Of Contents

---

<u>SAFETY PRECAUTIONS</u>	<u>PG. 1</u>
<u>PREPARATION BEFORE USE</u>	<u>PG. 2-4</u>
<u>OPERATING INSTRUCTIONS</u>	<u>PG. 5-8</u>
<u>STORAGE &amp; MAINTENANCE</u>	<u>PG. 9-10</u>
<u>PRODUCT SPECIFICATIONS</u>	<u>PG. 11</u>
<u>PROBLEMS &amp; SOLUTIONS</u>	<u>PG. 12-13</u>
<u>PLUNGER PUMP SERVICE GUIDE</u>	<u>PG. 14-15</u>
<u>PRODUCT WARRANTY</u>	<u>PG. 16-17</u>
<u>POPULAR OPTIONS</u>	<u>PG. 18</u>
<u>RESOURCES</u>	<u>PG. 19</u>
<u>CONTACT US</u>	<u>PG. 20</u>

**DRAIN  
INVADER** **PRO  
3005**




# Safety Precautions

**! WARNING:** A hazard that could result in death, serious injury, or substantial property damage.

**! CAUTION:** A hazard that could result in minor personal injury or property damage.

**! WARNING**

**Explosive Fuel can cause fires and severe burns.**




Stop engine before filling fuel tank.

**Explosive Fuel!**  
Gasoline is extremely flammable and its vapors can explode if ignited. Store gasoline only in approved containers, in well ventilated, unoccupied buildings, away from sparks or flames. Do not fill the fuel tank while the engine is hot or running, since spilled fuel could ignite if it comes in contact with hot parts or sparks from ignition. Do not start the engine near spilled fuel. Never use gasoline as a cleaning agent.

**! WARNING**

**Rotating Parts can cause severe injury.**



Stay away while engine is in operation.

**Rotating Parts!**  
Keep hands, feet, hair, and clothing away from all moving parts to prevent injury. Never operate the engine with covers, shrouds, or guards removed.

**! WARNING**

**Hot Parts can cause severe burns.**




Do not touch engine while operating or just after stopping.

**Hot Parts!**  
Engine components can get extremely hot from operation. To prevent severe burns, do not touch these areas while the engine is running, or immediately after it is turned off. Never operate the engine with heat shields or guards removed.

**! WARNING**

**Accidental Starts can cause severe injury or death.**




Disconnect and ground spark plug lead before servicing.

**Accidental Starts!**  
**Disabling engine. Accidental starting can cause severe injury or death.** Before working on the engine or equipment, disable the engine as follows: 1) Disconnect the spark plug lead(s). 2) Disconnect negative (-) battery cable from battery.

**! CAUTION**

**Electrical Shock can cause injury.**




Do not touch wires while engine is running.

**Electrical Shock!**  
Never touch electrical wires or components while the engine is running. They can be sources of electrical shock.

**! WARNING**

**Explosive Gas can cause fires and severe acid burns.**




Charge battery only in a well ventilated area. Keep sources of ignition away.

**Explosive Fuel!**  
Batteries produce explosive hydrogen gas while being charged. To prevent a fire or explosion, charge batteries only in well ventilated areas. Keep sparks, open flames, and other sources of ignition away from the battery at all times. Keep batteries out of the reach of children. Remove all jewelry when servicing batteries. Before disconnecting the negative (-) ground cable, make sure all switches are OFF. If ON, a spark will occur at the ground cable terminal which could cause an explosion if hydrogen gas or gasoline vapors are present.

**! WARNING**

**Carbon Monoxide can cause severe nausea, fainting or death.**



Do not operate engine in closed or confined area.

**Lethal Exhaust Gases!**  
Engine exhaust gases contain poisonous carbon monoxide. Carbon monoxide is odorless, colorless, and can cause death if inhaled. Avoid inhaling exhaust fumes, and never run the engine in a closed building or confined area.

**CALIFORNIA PROPOSITION 65 WARNING**

Engine exhaust from this product contains chemicals known to the State of California to cause cancer, birth defects, or other reproductive harm.

# PREPARATION BEFORE USE

**ALWAYS WEAR EYE PROTECTION & other PPE  
Such As Tough Gloves & Protective Clothing!**

## GETTING STARTED

*We recommend that you become familiar and skilled with the unit before trying it in a customer's pipe. Please follow these steps to learn to operate the machine.*

## FIND A SUITABLE WATER SOURCE

It is very important to realize that **this jetter wants to pump 5-GPM (Gallons-Per-Minute) at full-throttle therefore you must use a water-source that can "feed" the jetter a full 5+GPM at all times.** The pump will destroy itself from cavitation if the water-supply cannot keep up with the pump's demand! Symptoms of the pump "starving" for water might be: "groaning" noises from the pump, inconsistent motor-load noise, collapsing of the water-feed hose, the gauge's needle vibrates and/or reads low pressure. **PRO TIPS:** (a) Avoid cheap garden-hoses; use a commercial-grade 3/4-inch water-hose, no longer than 50-feet in length. (b) If one water-hose can't keep up with the 5-GPM water-demand, get a double-hose connector so you can hook up two water-hoses from 2 different sources. (c) If water-supply is still lacking, throttle back the engine (which reduces the GPM-demand) until any "groaning" stops and the jetter runs smoothly with steady gauge-reading. **Cavitation is potentially more damaging than other evils like running the pump dry, thermal shock, or exceeding the 3000-PSI pressure rating!**

*Cavitation occurs when the pump tries to pull in more water than is available, causing the water to vaporize momentarily inside the pump & then slam back into liquid form, which causes extremely violent shock to the pump and engine.*



# PREP WORK

## FOR YOUR **DRAIN INVADER PRO 3005**

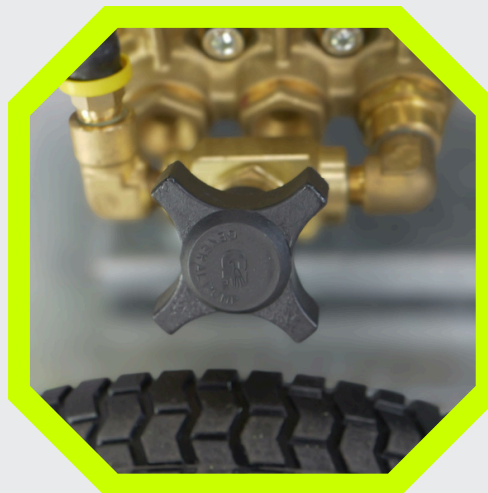
### **FAMILIARIZE YOURSELF WITH THE JETTER'S WATER SYSTEM & CONTROLS**

Look below the Hose/Reel near the baseplate to find the Garden Hose Water-Connection with Filter for feeding the High-Pressure Pump. There are two (2) Control-Valves built onto the pump: [a] the large **Pressure-Regulator/Unloader Valve** with round Adjustment-Knob (just above the pump), and [b] the smaller **Pulsation-Control Valve** with star-shaped Adjustment-Knob (just above the tire). Up near the Hose/Reel is the **Flow-Control Valve** which functions as your main Jetting-On/Jetting-Off control to start and stop water-flow through the hose-reel and out the Jetting Nozzle into the pipe.

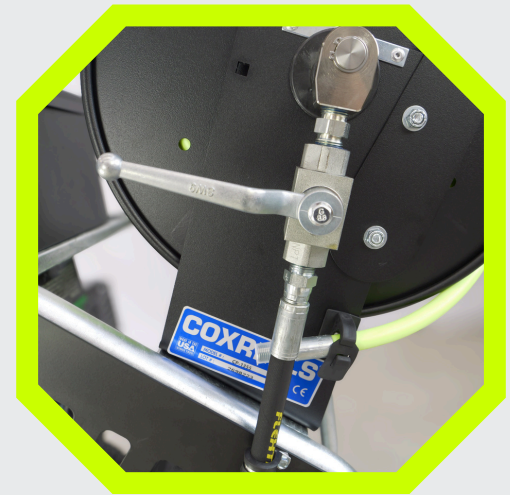
#### **Unloader Valve**



#### **Pulse Valve**



#### **Flow Control Valve**



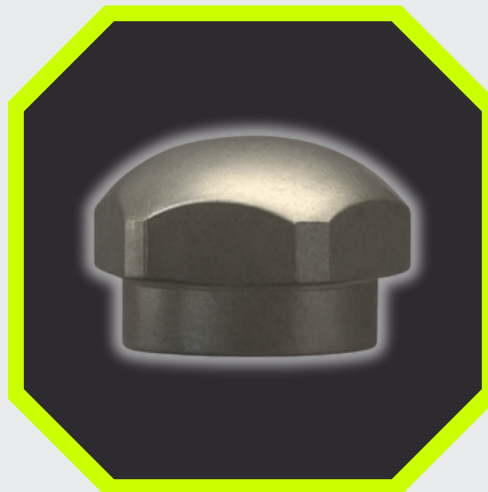
# PREP WORK

## FOR YOUR *DRAIN INVADER PRO 3005*

### **WHAT'S INCLUDED: JETTER NOZZLES**

Included with your Drain Invader PRO 3005 are 3 jetting nozzles, a "Penetrator", "Flusher", and "Pusher" (you may have also ordered optional nozzles). All have several "Thrust" water jets spraying toward the hose to pull the hose into the pipe and flush debris away. The "**Penetrator**" & "**Pusher**" Nozzles also have forward-spraying water jets to break up clogs. Note that the more water that jets out the nose of the nozzle the less "pulling-power" that nozzle will have since the forward jet(s) are pushing back against the rear thrust jets. Thus the "**Flusher**" nozzle without forward-jet will have the most hose-pulling power.

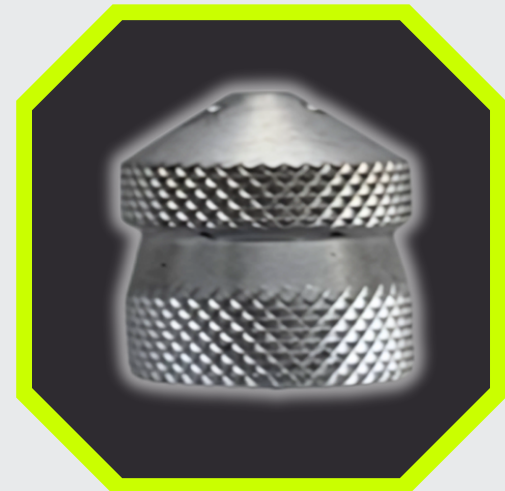
**Flusher**



**Penetrator**



**Pusher**



### **SAFETY FIRST: BEFORE RUNNING THE JETTER**

Please have any and all operators review the safety information on page 1

# OPERATING

## YOUR **DRAIN INVADER PRO 3005**

### **PRACTICE MAKES PERFECT**

Find a safe and stable 3-inch or 4-inch diameter “practice pipe” to practice/learn the jetting process (preferably not at a live job on the 1st run). Set the jetter at least 15 feet away from the practice pipe.

### **KNOW YOUR HOSE & REEL**

Familiarize yourself with Hose-Reel's function, and then unwind several feet of hose (WITH NO NOZZLE ATTACHED). **Add a few wraps of electrical tape around the Jetting-Hose about 5 feet from the end to work as a "safety-stop" marker - this is to warn you that the nozzle is near so you don't pull the hose out of the pipe when jetting under pressure!**

NOTE: you may want to add more tape-marks at particular footages [50', 100', etc.]

### **KNOW YOUR HONDA ENGINE**

Please read the HONDA Engine manual to learn the proper starting and daily-maintenance procedures.



### **START YOUR ENGINE**

When starting the jetter for the first time (or after long periods of non-use) hook up and turn on the water, hold the hose firmly near the end so the water will discharge away from you with NO NOZZLE OR TRIGGER ATTACHED, open the *Flow-Control Valve*, start the engine and run it at medium-throttle for about 3 minutes, then shut down the engine. This is to wet the pump-seals and warm the engine before building pressure in the next step...

# OPERATING

## YOUR DRAIN INVADER PRO 3005

### CONNECTING YOUR JETTER NOZZLE

Select a jetting Nozzle and tighten it securely to the end of the jetting-hose with wrenches (use thread tape if desired). Insert the Nozzle and hose deep into the test pipe – at least 10 feet. ***It is imperative that the nozzle not flop out of the pipe or severe injury or property-damage could occur!*** Open the *Flow Control Valve* by the hose-reel – now you are ready to start the engine and get to jetting!

### ASSESS YOUR SURROUNDINGS

Make sure that jetter and personnel are clear of the open pipe-end (water & possibly debris will be ejected from the pipe), then start the engine at medium throttle and watch the hose get pulled tight by the nozzle-thrust as the jetter builds pressure. Increase the engine speed to maximum throttle. Check the pressure gauge; the needle should be steady at 2500-3000 PSI if you have adequate water supply. **Do not expect full pressure unless the engine is at full throttle!** (RPM increases GPM, and forcing more GPM through the Nozzle builds PSI). Adjust the Regulator/Unloader Valve if desired – but DO NOT OVERTIGHTEN the knob. **Do not exceed the 3000-PSI maximum pressure at any time.**

### PRACTICE THE “RAM-ROD” TECHNIQUE

Grip the Jetting Hose and pull it a few inches back from the pipe. This will familiarize you with the thrust generated by the water jets on the nozzle. Let it go and pull it back again several times. This is the “Ram-Rod” technique used by many technicians to break through blockages.

# OPERATING

## YOUR DRAIN INVADER PRO 3005

### LEARNING THE FLOW-CONTROL VALVE

Close the *Flow-Control Valve* that is located near the Hose-Reel. You will hear the jetter build a little and then “release” pressure, and you'll see the Jetting Hose relax as the pump is now “recirculating” water instead of discharging out the Jetting Nozzle. Open and close the *Flow-Control Valve* several times (always fully open or fully closed) to familiarize yourself with its on/off effect. **IMPORTANT: do not run the jetter with the *Flow-Control Valve* closed for more than three (3) minutes;** recirculating water generates heat that can severely damage the pump.

### FEEL YOUR PULSE

Locate the “*Pulsation Control*” – the black “star-knob” just above the tire. Pulsation is used to make the hose vibrate (or “pulse”) to help the hose overcome drag-friction in the pipe, and to help get it un-stuck if hung up in the pipe. Turn the knob counter-clockwise until the hose begins to vibrate, or “Pulsate”. Turn the knob back and forth to familiarize yourself with the pulsator effect. To stop the pulse; rotate the star-knob clockwise until it stops turning. **NOTES:** (a) *Opening the Pulse will lower your pressure as it “disables” one of the pump-cylinders.* (b) *Do not leave the pulsator on for long periods of time as it does cause extra stress to the machine.*

# OPERATING

## YOUR DRAIN INVADER PRO 3005

### CONNECTING OPTIONAL ACCESSORIES

If you connect an optional accessory to the Jetter (e.g. smaller Jetting Hose, Secondary Hose/Reel, Foot-Control Valve, Pressure-Washing Trigger/Wand, etc.) we highly recommend that you back the Pressure-Regulator Unloader-Valve off one full turn to avoid "Pressure-Spikes" from these devices. **Again, do not exceed the 3000-PSI maximum pressure at any time!**

### GET JETTING!

You now have run all facets of the machine. Again, we recommend that you develop these basic operational skills with the jetter in a practice-pipe before ever using it in a customer's pipe. Practice in pipes that are easy to access to gain jetting experience. Before you get to jetting, **always** make sure the jetting area is clear of bystanders.

### SHUTTING DOWN

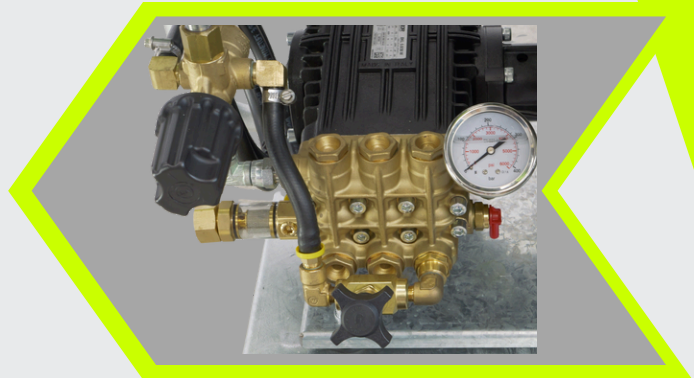
When finished jetting, turn off the engine and then the water supply. **Before removing the nozzle from the pipe relieve any pressure left in the system by opening the Flow-Control Valve.** If equipped, step on the *Foot-Control Valve* or squeeze the Hand-Trigger to release any trapped pressure *before* removing the Jetting Nozzle from the pipe. Rewind the Jetting Hose and store any loose nozzles or accessories.

# STORAGE & MAINTENANCE

## OF YOUR *DRAIN INVADER* PRO 3005

### **PROTECT FROM FREEZING**

If storing in freezing temperatures, remove the jet-nozzle, secure the hose, open the *Flow-Control Valve*, then connect compressed air to the garden-hose connection to purge all water out of the pumping system and jetting-hose.



### **LONG TERM STORAGE**

If storing the unit for several months, close the gasoline-valve (see engine manual) then run the unit until it dies (with the water on but no nozzle) to clear the carburetor of gas.

### **ENGINE & PUMP OIL**

Change the *engine* oil and filter as specified in your engine's manual (scan QR code on page 5 of this manual)

Change the *pump* oil after the first 30 hours and then every 300 hours.

Use only approved pump lubricating oil – call us or see your local service center for the correct oil (30-weight *NON-DETERGENT* pump/compressor lubricating oil).



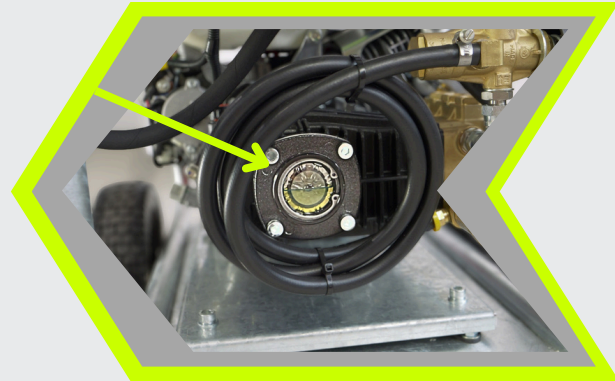
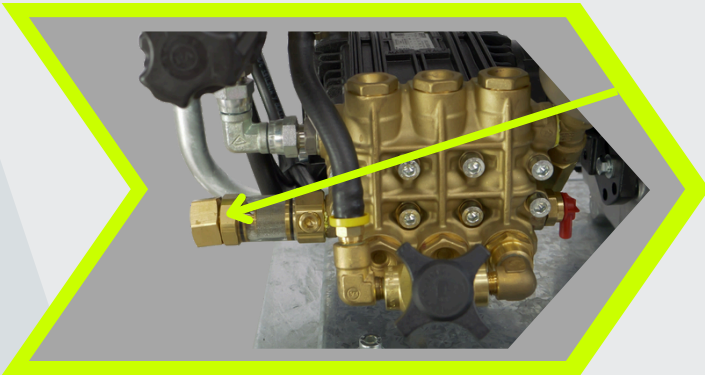
# STORAGE & MAINTENANCE

---

## OF YOUR *DRAIN INVADER* PRO 3005

### DAILY PUMP CHECK

Check the oil-levels in the Pump and the Engine. The oils should be clean and clear; cloudy, milky, or dirty oils indicate that servicing is needed ASAP.



### WATER FILTER CHECK

Inspect the water filter for debris; clean as needed or at least once a week.



### DAILY NOZZLE CHECK

Inspect your nozzles for clogged orifice-jets which weaken cleaning power & nozzle thrust. Clear with the orifice-cleaner tool (included in the nozzle-case).



### DAILY HOSE CHECK

Inspect the Jetting-Hose for cuts in its cover, kinks, exposed inner-braids, etc. ***SAFETY FIRST: Never use a damaged jetting-hose: it could burst under pressure! High-PSI water can cause injury; always repair or replace worn or kinked Jetting-Hose BEFORE it bursts under pressure!***

# PRODUCT SPECIFICATIONS

---

## OF YOUR *DRAIN INVADER* PRO 3005



### **Performance Specs:**

Max Flow: **5 GPM**  
Max Pressure: **3000 PSI**

### **Pressure-Regulation:**

Pressure-Compensating Unloader Valve, Adjustable

### **Engine Specs & Info:**

**389cc**, OHV, with Electric-Start  
("Intelligent" Honda iGX-390)

### **Automatic Engine Controls:**

Load-Sensing Automatic Throttle  
Automatic Choke

### **Jetting Hose:**

5/16" I.D. x 250-foot Low-Friction Jetting Hose, max 4000psi, fitted 1/4" NPT

### **Nozzles** (standard):

- Bullet Penetrator 1x6
- Flusher 0x5
- Pusher 3x6



# POTENTIAL PROBLEMS & SOLUTIONS

Problem	Potential Cause	Solution
<b>Low Pressure</b>	Nozzle worn, incorrectly sized, or plugged.	Replace with proper size, or clean the orifices.
	Inadequate water supply.	Find another source or add secondary supply hose.
	Air leak in inlet plumbing.	Disassemble, reseal and reassemble.
	Pressure gauge inoperative or not registering accurately.	Check with new gauge; replace worn or damaged gauge.
	Relief / unloader valve improperly adjusted, stuck, or the valve is worn out.	Adjust relief / unloader valve. If necessary, repair or replace.
	Inlet suction filter/strainer clogged or improper size.	Clean, use adequate size, check more frequently.
	Worn high pressure seals in pump.	Replace all seals in pump.
	Fouled or dirty inlet or discharge valves in the pump.	Clean inlet and discharge valve assemblies.
	Worn inlet or discharge valves in the pump.	Replace worn valves.
	Leaky hose or fitting.	Repair or replace hose or fitting.
<b>Pump runs extremely rough, pressure very low</b>	Restricted water inlet or air entering the inlet plumbing.	Clear restriction, check for air tight seal at fittings & filter.
	Fouled inlet or discharge valves inside pump.	Clean out material in valves or replace worn valves.
	Plugged inlet filter.	Clean or replace filter.
<b>Water leakage from under the manifold.</b>	Worn pump seals, or cracked plunger in pump.	Replace seals. Install new plungers.
<b>Oil leak between crankcase and pumping section.</b>	Worn crankcase oil seals.	Replace crankcase oil seals.
<b>Oil leaking in the area of crankshaft</b>	Worn crankshaft seal or bearing case O-ring.	Replace crankshaft seal or bearing case O-ring.
	Bad bearing.	Replace bearing.

# POTENTIAL PROBLEMS & SOLUTIONS

Problem	Potential Cause	Solution
<b>Oil leaking at the rear portion of the crankcase.</b>	Damaged or improperly installed sight glass or crankcase rear cover O-ring and drain plug O-ring.	Replace sight glass, crankcase cover or drain plug O-ring.
<b>Loud knocking noise in pump.</b>	Inadequate water supply (cavitation noise).	Find another source or add secondary supply hose.
	Broken or worn pump bearing or rod.	Replace bearings or rod.
<b>Frequent or premature failure of the pump seals</b>	Scored plungers. Excessive water supply pressure. Pumping dirty water. Excessive temperature of fluid being pumped. Running pump dry.	Replace plungers. Reduce inlet pressure. Max. 75 PSI. Ensure water supply is rust-free and clean. Maximum water temperature 120 deg F. DO NOT run pump without water.
<b>Strong surging at the inlet and low pressure discharge.</b>	Foreign particles in the pump's inlet or discharge valve or worn inlet and/or discharge valves.	Clean or replace worn valves. Install and regularly clean water filter. Never pump abrasive fluids.

# PLUNGER PUMP SERVICE GUIDE

---



## REPLACING PUMP VALVES

- All inlet and discharge valves can be serviced without disrupting the inlet or discharge plumbing
- To service the valves, remove valve caps.
- Remove the valve assembly from the valve cavity.
- Remove o-ring from valve cavity.
- Only one valve kit is necessary to replace all the valves in the pump. The kit includes new o-rings and valve assemblies.
- Install o-ring into cavity.
- Insert valve assembly into valve cavity.
- Install valve cap and torque to specifications. NOTE: Use blue thread locker or equivalent on all valve caps.

## REMOVING PUMP HEAD

- Remove the bolts from the pump head.
- Separate the head from the crankcase. NOTE: It may be necessary to tap head lightly with a plastic or rubber mallet to loosen.  
**CAUTION:** Do not damage plungers when removing the head.
- The packing assemblies typically come off with the head. At this point, inspect ceramic plungers. Plunger surfaces should be smooth and free from scoring and cracks. IF NOT, replace plunger.

# PLUNGER PUMP SERVICE GUIDE

---

## **REPLACING CERAMIC PLUNGERS**

- Remove plunger nut or bolt, then remove plunger from piston rod.
- If slinger washer comes off with the plunger, be certain this is reinstalled or replaced before a new plunger is installed.
- Separate plunger bolt from plunger.
- Install new o-ring, teflon back-up ring and washer on plunger bolt or stem. NOTE: A film of grease on the outside of the o-rings ensures a better installation.
- Carefully insert plunger bolt into plunger. NOTE: Use red thread locker or equivalent on all plunger nuts or bolts.
- Slide new plunger over the piston guide and torque to specifications.

## **REPLACING HIGH-PRESSURE SEAL KIT**

- Insert proper seal stack extractor tool or reversible pliers through sealretainer. Extract retainers, packings and spreader rings.
- Place proper insertion sleeve into cylinder and install plastic spreader ring into bottom of the cylinder. Insert high pressure seal into insertion sleeve and tap firmly into place. Remove insertion sleeve.
- Install long life ring on top of the high pressure seal and insert middle brass ring.
- Install the low-pressure seal into upper brass ring, lightly grease the outer o-ring and insert into cylinder
- Coat each plunger and seal stack with grease and carefully reinstall the pump head. NOTE: It may be necessary to tap pump head lightly with a plastic or rubber mallet. Install head bolts and torque to specifications.

# PRODUCT WARRANTY

---

## FOR YOUR *DRAIN INVADER* EQUIPMENT

### WHAT IS COVERED

*Drain Invader* warranties new items of our manufacture from defects in materials or workmanship for a period of one year from date of delivery to the 1st customer. This policy is limited to products manufactured by *Drain Invader*. **Products that we purchase from other manufacturers, such as the engine and the pump, are covered by their own warranties which may go beyond our one year.** Refer to the original manufacturer's policy for warranty details on these types of products:

- HONDA Engines: **3-YEAR Limited Warranty**
- UDOR Pumps: **5-YEAR Limited Warranty**

### WHAT IS NOT COVERED

The warranty shall not apply to product malfunctions or failures resulting from misuse, abuse, neglect, loss, damage caused by disasters (such as fire, flood, lightning, earthquake, vehicle-crash, etc.), interaction with products not approved by *Drain Invader*, or improper repairs to any part of the equipment. Improper repairs shall include repairs made by persons not authorized by *Drain Invader*, or repairs utilizing parts or materials not equal to those furnished by *Drain Invader*. ***Drain Invader* will NOT pay for unauthorized repairs.** The warranty shall not cover failure due to normal wear. Jetting hoses, Nozzles, and Hose-Fittings are not covered as they are subject to pipe conditions.

# PRODUCT WARRANTY

---

## FOR YOUR *DRAIN INVADER* EQUIPMENT

### ***WHAT DRAIN INVADER WILL DO***

Should a *Drain Invader* manufactured product prove defective during the warranty period, the customer is required to notify the selling dealer or *Drain Invader* immediately. The defective components or parts shall be securely packaged, including a packing list identifying the components or parts, and description of the defect and shipped to the *Drain Invader* Service Department within ten working days. **Return shipping costs are the responsibility of the customer.**

After determination of warranty eligibility, *Drain Invader* will, at its option, repair or replace the defective components or parts and return them to the customer. We shall also pay - if pre-authorized by *Drain Invader* - reasonable labor to fix any items found to be defective, and/or refer the customer to the nearest authorized warranty center (especially for engine warranties and the like).

***Drain Invader* SHALL NOT BE LIABLE FOR ANY LOSS, INCONVENIENCE, INJURY, OR DAMAGE, INCLUDING DIRECT, SPECIAL, INCIDENTAL, OR CONSEQUENTIAL DAMAGES, RESULTING FROM THE USE OF OR INABILITY TO USE ANY *Drain Invader* PRODUCT, OR ANY BREACH OF WARRANTY EXPRESSED OR IMPLIED.**





REAPER ATTACK NOZZLE



1/4" ROOT RANGER NOZZLE



GREASE HOG NOZZLE



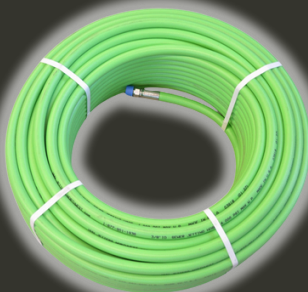
P-TRAP NOZZLE



3/16" TRAP-HOSE & REEL



1/4" MINI-HOSE & REEL



JETTER HOSES (all sizes)



INSPECTION CAMERAS



ELECTRIC MINI JETTERS

# Resources



***Popular Options: DRAIN INVADER***  
***Accessories, Nozzles, Hoses, Parts***  
***and More***



***Owners Manual: DRAIN INVADER***  
***PRO 3005 Jetter***



***Owners Manual: HONDA Engine***  
***iGX240-iGX270-iGX340-iGX390***



***Owners Manual: UDOR Pump***  
***BL Series Direct Drive, Gas Engine Flange Plunger Pumps***




# Contact Us

Need help with your *Drain Invader* equipment? Our team is here for you pros who keep things flowing. From setup and maintenance tips to troubleshooting and replacement parts, you'll get straight answers and customer-first support every time.

For the unsung heroes of plumbing—more power, less hassle.

- **Phone**

 (866) 631-3569


- **Message**

 [cs@draininvader.com](mailto:cs@draininvader.com)

- **Website**

 [www.DrainInvader.com](http://www.DrainInvader.com)

- **Address**

 [16750 Redmond - Woodinville Rd NE C-101, Woodinville, WA 98072, United States](#)

- **Follow Us**



# **DRAIN INVADER**

**FOR THE UNSUNG HEROES OF PLUMBING**